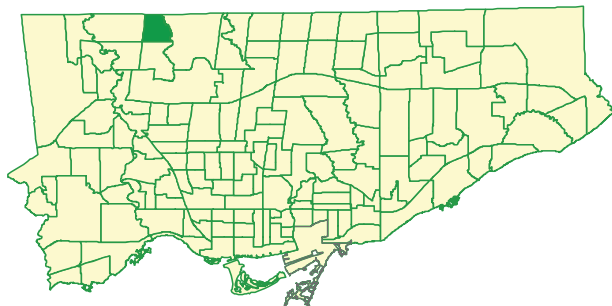
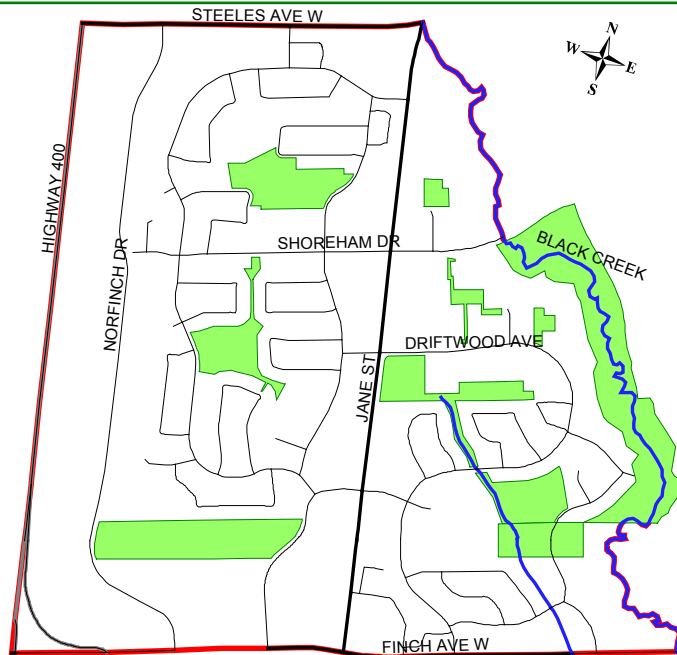
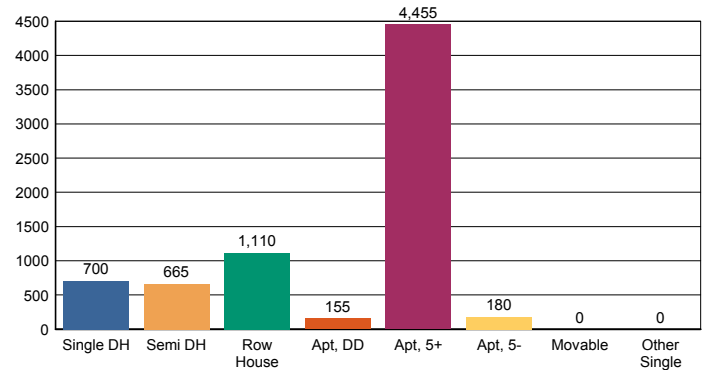


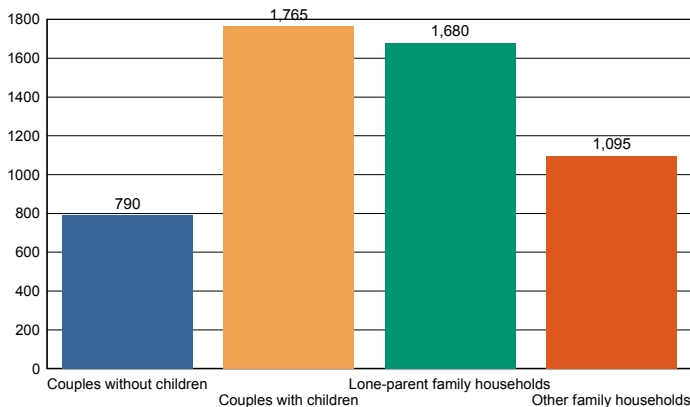
# Black Creek (24)



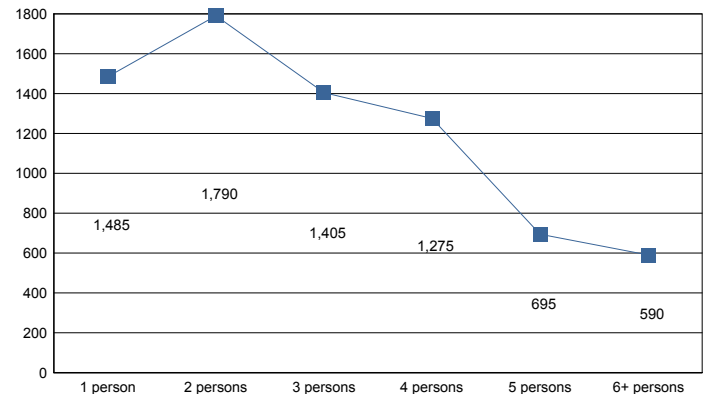
Private Dwellings by Structure Type



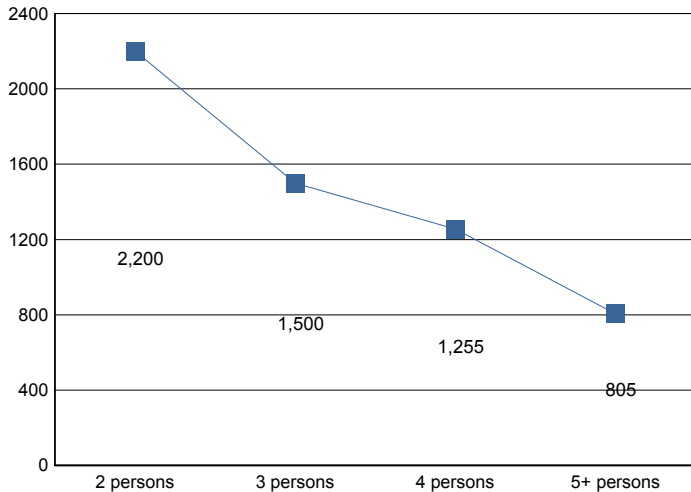
Private Households by Living Arrangements



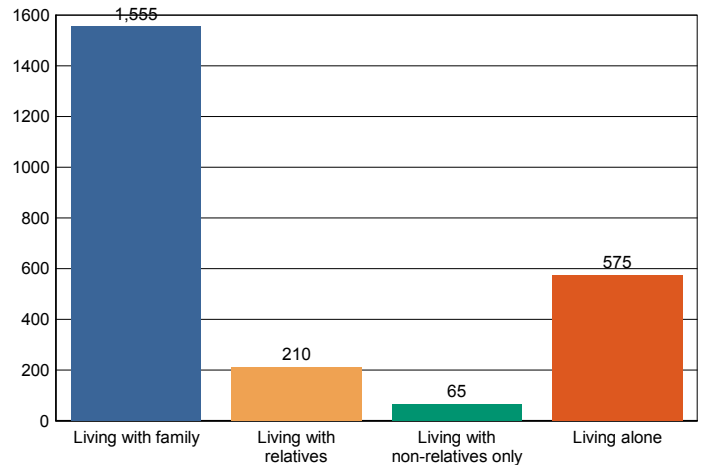
Private Households by Size



### Persons in Census Family

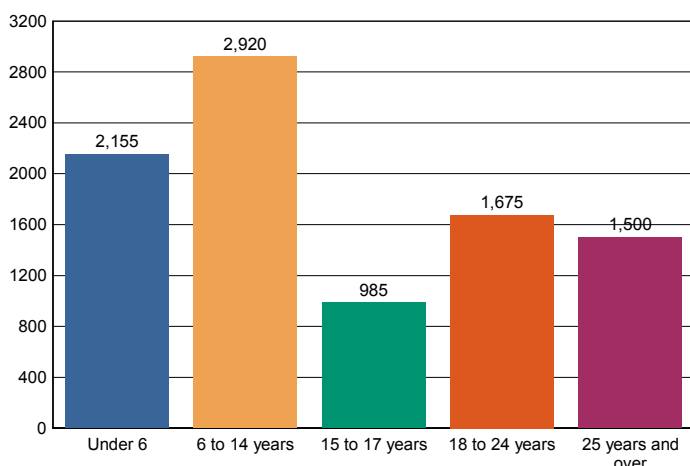


### Living Arrangements of Seniors 65+

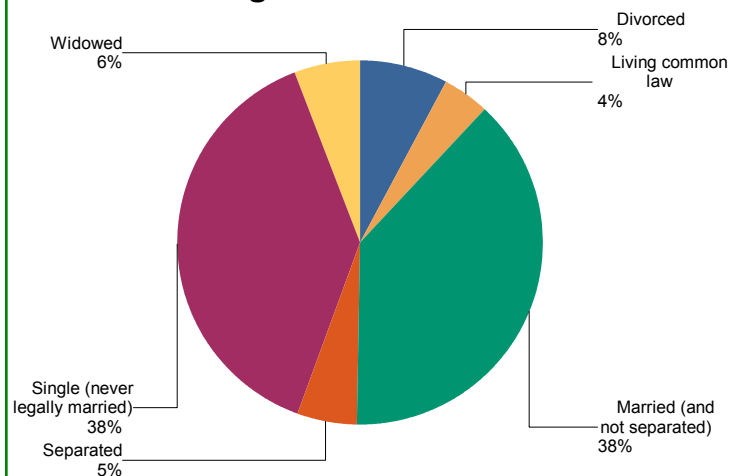


Census family is defined as a married couple and the children, if any, of either or both spouses; a couple living common law and the children, if any, of either or both partners; or, a lone parent of any marital status with at least one child living in the same dwelling and that child or those children. All members of a particular census family live in the same dwelling. A couple may be of opposite or same sex. Children may be children by birth, marriage or adoption regardless of their age or marital status as long as they live in the dwelling and do not have their own spouse or child living in the dwelling. A private household refers to a person or a group of persons (other than foreign residents) who occupy a private dwelling and do not have a usual place of residence elsewhere in Canada.

### Total Children in Private Households



### Legal Marital Status



## Black Creek (24)

|   | 2001  | %      | 2006  | %      | 2011  | %      | 2001-2011<br>%change |
|---|-------|--------|-------|--------|-------|--------|----------------------|
| <b>Total # of census families in private households</b> | 6,435 | 100.0% | 5,745 | 100.0% | 5,755 | 100.0% | -10.6%               |
| <b>Total couple families by family structure</b>        | 4,200 | 65.3%  | 3,615 | 62.9%  | 3,395 | 59.0%  | -19.2%               |
| <b>Married couples</b>                                  | 3,880 | 60.3%  | 3,255 | 56.7%  | 3,035 | 52.7%  | -21.8%               |
| <b>Without children at home</b>                         | 1,090 | 16.9%  | 1,090 | 19.0%  | 965   | 16.8%  | -11.5%               |
| <b>With children at home</b>                            | 2,780 | 43.2%  | 2,165 | 37.7%  | 2,070 | 36.0%  | -25.5%               |
| <b>1 child</b>  | 940   | 14.6%  | 845   | 14.7%  | 715   | 12.4%  | -23.9%               |
| <b>2 children</b>                                       | 1,050 | 16.3%  | 790   | 13.8%  | 815   | 14.2%  | -22.4%               |
| <b>3 or more children</b>                               | 800   | 12.4%  | 550   | 9.6%   | 540   | 9.4%   | -32.5%               |
| <b>Common-law couples</b>                               | 330   | 5.1%   | 360   | 6.3%   | 370   | 6.4%   | 12.1%                |
| <b>Without children at home</b>                         | 140   | 2.2%   | 140   | 2.4%   | 120   | 2.1%   | -14.3%               |
| <b>With children at home</b>                            | 190   | 3.0%   | 220   | 3.8%   | 240   | 4.2%   | 26.3%                |
| <b>1 child</b>  | 80    | 1.2%   | 95    | 1.7%   | 85    | 1.5%   | 6.3%                 |
| <b>2 children</b>                                       | 50    | 0.8%   | 85    | 1.5%   | 95    | 1.7%   | 90.0%                |
| <b>3 or more children</b>                               | 55    | 0.9%   | 35    | 0.6%   | 70    | 1.2%   | 27.3%                |
| <b>Total lone-parent families by sex of parent</b>      | 2,225 | 34.6%  | 2,125 | 37.0%  | 2,365 | 41.1%  | 6.3%                 |
| <b>Female parent</b>                                    | 1,965 | 30.5%  | 1,875 | 32.6%  | 2,065 | 35.9%  | 5.1%                 |
| <b>1 child</b>  | 790   | 12.3%  | 855   | 14.9%  | 920   | 16.0%  | 16.5%                |
| <b>2 children</b>                                       | 610   | 9.5%   | 570   | 9.9%   | 620   | 10.8%  | 1.6%                 |
| <b>3 or more children</b>                               | 550   | 8.5%   | 455   | 7.9%   | 510   | 8.9%   | -7.3%                |
| <b>Male parent</b>                                      | 270   | 4.2%   | 255   | 4.4%   | 305   | 5.3%   | 13.0%                |
| <b>1 child</b>  | 160   | 2.5%   | 130   | 2.3%   | 185   | 3.2%   | 15.6%                |
| <b>2 children</b>                                       | 55    | 0.9%   | 85    | 1.5%   | 90    | 1.6%   | 63.6%                |
| <b>3 or more children</b>                               | 50    | 0.8%   | 25    | 0.4%   | 40    | 0.7%   | -20.0%               |