

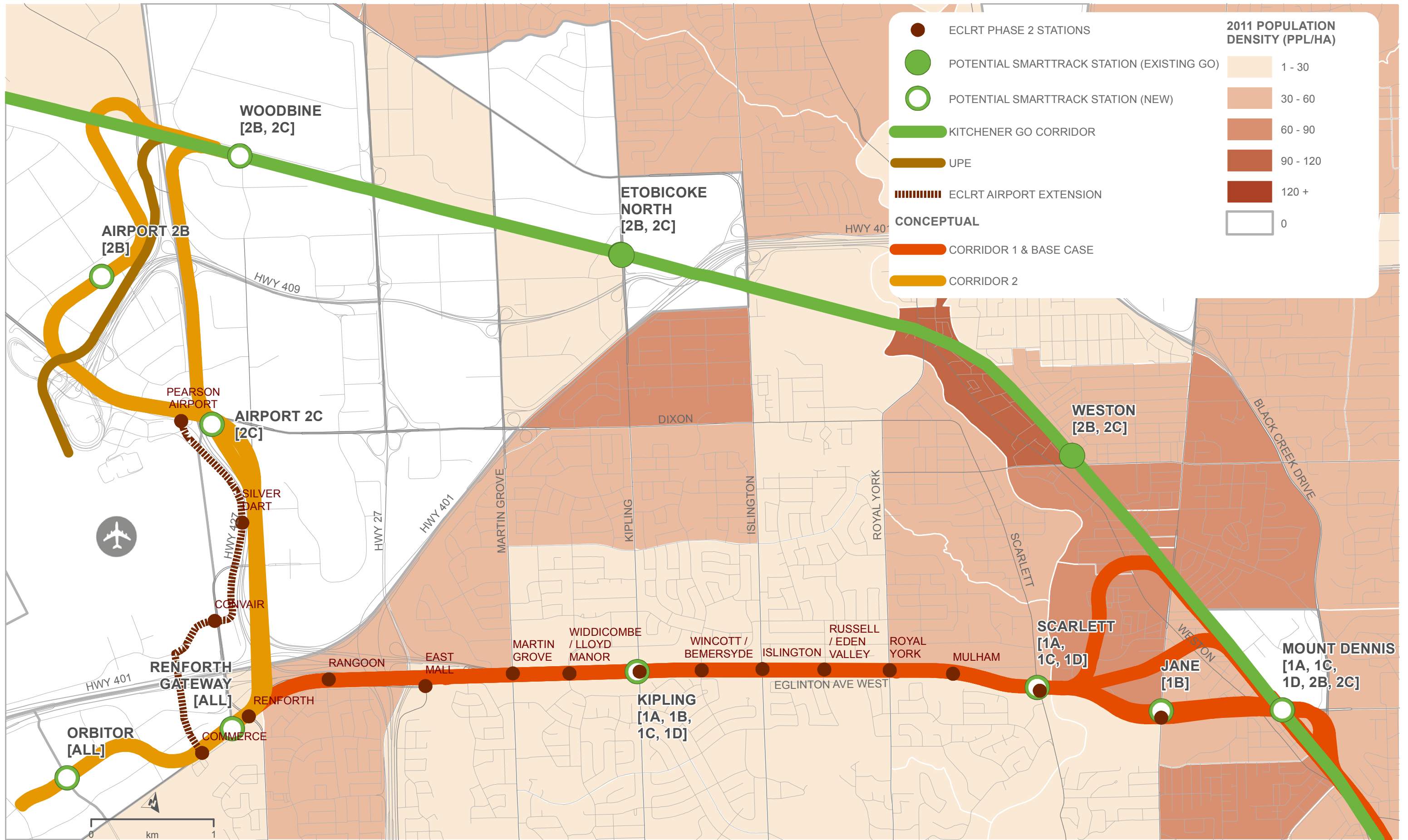
January
2016

SmartTrack Western Corridor Feasibility Review

Appendix 8B **Existing Population Density**

City of Toronto





- ECLRT PHASE 2 STATIONS
- POTENTIAL SMARTTRACK STATION (EXISTING GO)
- POTENTIAL SMARTTRACK STATION (NEW)
- KITCHENER GO CORRIDOR
- UPE
- ECLRT AIRPORT EXTENSION

CONCEPTUAL

- CORRIDOR 1 & BASE CASE
- CORRIDOR 2

2011 POPULATION DENSITY (PPL/HA)	
	1 - 30
	30 - 60
	60 - 90
	90 - 120
	120 +
	0

EXISTING POPULATION DENSITY (2011)

SOURCE: CITY OF TORONTO AND CITY OF MISSISSAUGA

SMARTTRACK EGLINTON AVENUE WEST CORRIDOR FEASIBILITY STUDY

